



Amida Buddha Part II

By Rinban Don Castro

Last month I wrote about ways I understand the nature and meaning of Amida Buddha. How you talk about Amida Buddha depends on the vocabulary you choose; mythological, philosophical, psychological, etc. Last month, I wrote about Amida Buddha as myth. This month, I would like to write about Amida Buddha using the language of philosophy.

To me, trying to define Amida Buddha is like trying to define the word “key.” It is impossible to meaningfully talk about a key without telling what it does. This functional approach, I think, is most useful in defining Amida Buddha. To talk about Amida Buddha is to talk about what he does, his Primal Vow and the Power of the Primal Vow (Hongan-riki). It is this dynamic nature of Amida Buddha that makes it vital. My favorite passage defining “the main vow” comes from a small booklet “The Unimpeded Single Way” by the late Rev. Philipp Karl Eidmann:

“...the main vow of Amida, as Shinran saw it, is a statement of a truth. A truth is a law, and if true is true forever. A truth is an explanation of the essential features of a set of facts. We cannot speak of facts as being true. Facts are verified by the senses; they occur in time and space. Truths are verified by the mind. Facts change, truths remain true forever. The law of gravity, for instance, describes what happens when the fact occurs that something is thrown up in the air, only to return to earth. The law of gravity is a truth.

In the same way, the main vow of the Buddha is a truth. It says that no true enlightenment exists to be entered by a saint if other people also, breaking free from Karma, are not able to enter this

continued on p. 2...



2016 Hanamatsuri photo by Julie Mayeda

In This Issue

- Messages by Rinban and President Alan
- Hanamatsuri Photos
- SBBWA, Musical Notes
- Religious Education
- Donation Listings
- Dharma Exchange
- Troop 252, Camp Fire, Dharma School, Jr YBA
- Rinban's Retirement
- All-Sangha Memorial
- Membership

...Rev. Castro's Message continued from p. 1

state (Shinshu Shogyo Zensho, vol. I, page. 22). This, then, is a truth, a relation between fact and fact. One fact is that enlightenment does exist, while another is that people do attain it. Because this is a truth, and truths are mental and subjective, our achievement of truth must be subjective. We must individually realize the truth of the main vow in our own experience (SSZ, vol. III, page 572) This realization comes about by losing our sense of selfish individuality, by destroying our egoism.

The destruction of our ego brings us to Nirvana. Just as throwing a ball into the air demonstrates the law of gravity as it falls. So the destruction of the ego demonstrates the main vow of the Buddha. Hearing of this main vow, and hearing its true meaning, we come, in the awakening of faith, to experience for ourselves, the main vow as a truth."

There are many other ways of talking about Amida Buddha and the power of his primal vow but I particularly like this one. Powerful social movements have been based on this idea of the power of the Truth. I think, for instance, of the non-violence movement of Mahatma Gandhi who talked about "Truth Force." We have to study and test for ourselves whether the power we are using is, in fact, the power of the Truth. It is to this end that we study and constantly examine our assumptions.

Receive Weekly All Sangha News via email - contact [Tyler Moriguchi](#) or [Joan Nakano](#) at Office@SeattleBetsuin.com

Dharma School

Many thanks to the Dharma school families for coordinating and decorating the beautiful hanamido. Also special thanks go to Ron, Marie, and Joan for organizing the delicious Hanamatsuri luncheon and to all their helpers.

Classroom Reports:

PreK/K To celebrate Hanamatsuri, the Pre-K/K class made Hanamatsuri and Happy Birthday Buddha cards that they gave to friends and family members. On the front of the card, they decorated a Hanamido with flower stickers.

The following week, the class listened to a story about Shinran's determination to become a monk at the age of 9. The students talked about the importance of doing what we can today, comparing our lives to cherry blossoms. They decorated a picture with tissue paper cherry blossoms to remind them of Shinran's poem and to listen to the Buddha Dharma without delay.

To celebrate Earth Day, the students learned why it was important to recycle and reuse. To test their knowledge they were shown different items and they had to guess whether it was trash, recycle or compost. They were given an "Earth Day" coloring/activity book to do at home. They then enjoyed a snack of "dirt and worms". To conclude their Earth Day lesson, the children were told to wash out the pudding cup and reuse the cup as a planter.

High School Class We focused on how rare it is to be born as a human being. It's been calculated to be like rolling the same number on a die(dice) 6 million times in a row. Another example is a blind turtle living on the ocean bottom. The turtle comes to the ocean surface once every 100 years. There is a floating yoke (wooden cross-piece fastened over necks of two animals attached to a plow) freely moving where the ocean currents and winds take it. The chance of being born as a human is said to be as rare as the blind turtle poking its head in the middle of the floating yoke.

Given this life what will we accomplish to make a positive difference in our world. The photos are a graphic representation of learnings of the month. *Dharma School report submitted by Joyce Tsuji*



Chairperson's Message by Alan Hoshino

The flowers are blooming and we're well into spring, a season often associated with regrowth, renewal and rejuvenation. In the temple renewal and rejuvenation are occurring in our basement where the dining room and classrooms are in the midst of a renovation that will transform the formerly dark and dingy rooms into brighter and updated spaces that will be better venues for our programs and activities.

The dining room remodeling project has been in the planning stages since 2013 but kicking it off kept dragging on and on due to a mindset we've had for a number of years of "we'll fix it when it breaks." I'm happy to report that at the last temple board of directors meeting the directors decided we are changing that mindset to one of renewal, rejuvenation and growth!



Continued on page 8...

ALL SANGHA MEMORIAL SERVICE

SENBOKAI-IN TSUITO HOYO, Sunday, June 5, 2016 - Service at 10:00 AM

The annual **ALL SANGHA MEMORIAL SERVICE** will be held on **Sunday, June 5, 2016, at 10AM**. This important service is dedicated to honoring the lives and contributions of members and friends of the temple who have gone before us.

During the All Sangha Memorial Service, photos of those being remembered will be displayed on a screen in the hondo. We invite families of the deceased to submit the name and a photo of their loved one to office@seattlebetsuin.com. Please limit the file size of photographs to 100KB and include your name and telephone number in your e-mail message. If you submitted a photo for previous years' services and want it displayed again during this year's service you do not have to do anything. If you want to remove or replace a photo please send the appropriate instructions by email to office@seattlebetsuin.com.

If you do not have a digital photo available you may bring a color or black and white photograph to the Betsuin office and the office staff will scan it for you. If no photo is available you may submit just the person's name to the same e-mail address and it will appear on the screen during the service. You may also complete the form below and submit it to the Betsuin Office.

The deadline for submission of photos and names is Sunday, May 29. We cannot guarantee that photos/names received after the deadline will be included.

In Gassho, *Seattle Betsuin Buddhist Temple, 1427 S. Main Street, Seattle, WA 98144, (206) 329-0800*

Name of Deceased

[All-Sangha Memorial Service June 5, 2016 10:00 AM](#)

Submitted by: _____ Phone #: _____

SBBWA News by Nina Tomita-Kato A huge thank you to all of our members that were able to help out with the Salmon Dinner. It all began 1 week or more prior to the event; the manju preparations and the tsukemeno cutting, then more manju making, 3 or 4 days worth of preparing, cooking, baking. The end result; delicious, beautiful and artistic Japanese pastries. The salad dressing was tasty and the ohagi was out of this world. Many members were able to help out with the serving of the meal, as well as, the preparation of miso shiru. The meal was fit for an emperor and empress and the reviews were positive.



Making manju
for Salmon Dinner Fundraiser



Polishing onaijin's brass lanterns

Another huge thank you to our members that helped with the onaijin cleaning; we even had husbands that joined us for this special morning of cleaning.

This is the month of thanks, thanks to the many toban months that cleaned the pantry. Sparkling and clutter free, hope folks can keep it up.

We are looking for members to let us know if they are interested in the excursion to Japan in the spring of 2017. It looks as though the trip will focus around Shinran's footsteps which should be informative and inspirational. Deadline to make commitment is May 31. Please let Machiko Wada or Nina Tomita Kato know if you would like more information or would like to join the group.

BWA Udon fundraiser is scheduled for May 15. Each udon is priced \$7.00, tickets are on sale every Sunday mornings. Currently church basement dining room is being renovated, we hope everyone to take the Udon home instead of eating at church. We will have udon and soup in separate packages. Very limited space is available to eat at high school room. Baked goods will be sold in the gym stage and the front foyer. Thank you in advance for your support. Please bring your baked goods donation also.

Coming Events:

May 1: BOD meeting May 15: Udon fundraiser May 22: Cabinet meeting June 26 - July 1: KSP

Musical Notes

submitted by Kemi Nakabayashi Thank you to the Seattle Betsuin Ukulele Band (SBUB) and Sangha Singers for leading the singing of *Happy Buddha Day* for our Hanamatsuri service last month. The English translation of *Hanamatsuri Kodomo no Uta* by the Hawaii Music Committee was used to reintroduce this gatha this year and brought back nostalgic memories to those who recall singing the Japanese gatha decades ago.

The Earth Day music service on April 17 may have set a record for the number of musician participants—41, I believe, not counting our supportive ministerial staff. Donna Zumoto with Emily, Kayla and Souma from Matsuri Taiko provided the opening kansho with Ben Dodobara as our reliable bonsho ringer. Maia, Drew and Jared made their service music debut. The SBUB with Steve Yama-



saki on clarinet provided a lovely rendition of *Sakura, Sakura* for us to sing the familiar Japanese folk tune as a musical interlude. Aaron and Allison on viola with Kayla and Alina on flute performed the Earth Day gatha *Precious Earth*, accompanied by Kemi on piano. Thank you to Jim Norton for arranging *The Sound of Music—Climb Ev'ry Mountain* for our Betsuin ensemble and Sangha Singers. I regret there was not space in the service program to list all the ukulele band members and singing leaders but would like to credit here the ukulele band: Sat Ichikawa, Gail Kaminishi, Marlene Okada, Ann Oxrieder, Greg Oxrieder, Sunkie Oye, Elsie Taniguchi, Dolly Tokunaga, Rona Warrick, Tomi



Zumoto and Elsie Taniguchi and leader Mas Tamekuni.

Continued on page 7 ...

Religious Education Events

The Importance of Hearing in Shin Buddhism **English Language Seminar with Rev. Dr. Nobuo Haneda**

Director of the Maida Center of Buddhism, Berkeley, CA

Friday, April 29, 2016


7:00 – 9:00 pm, at Seattle Betsuin

Seattle Buddhist Temple welcomes
Joseph Marino, PhD Candidate at the
University of Washington and a member
of the Early Buddhist Manuscripts
Project ebmp.org




For a discussion on
Gandharan Buddhist Texts:
What the Oldest Extant Buddhist
Manuscripts Tell Us About
Early Buddhism
Saturday, June 4 at 9:30am in
Memorial Hall Chapel, Seattle Buddhist
Temple 1427 S. Main Seattle, WA 98144
Questions: 206-329-0800 or
office@seattlebetsuin.com, in conjunc-
tion with June's First Saturday Buddhist
Study Group at Seattle Betsuin

Suggested Donation: \$10



Tacoma Buddhist Temple
Spring Public Seminar
2016 Theme "Peace and Conflict"




What Happens When I Die?

-How is Pure Land related to my present life?-

Saturday, May 21, 2016
3:00 pm - 5:00 pm

Admission: Temple Members - Free
Non Members - \$ 10 (suggested donation)



Guest Speaker:
Rev. Kiyonobu Kuwahara
(Co-Director of BCA Center for Buddhist Education)

He completed Ph. D. Program in Jodo Shinshu (Shin Buddhism) in 2003 at Ryokoku Univ. in Kyoto, Japan.
He loves American food. He is married and a father of three sons.
Favorite phrase: "Wanting less and realizing that I've already had plenty. (少欲知足)"

Rev. Kuwahara will also speak at our Sunday Service on May 22 at 10 am.

Tacoma Buddhist Temple
(Up the hill from UWT campus)
1717 S. Fawcett Ave., Tacoma, WA 98402
TEL: (253)627-1417
WEB: www.tacomabt.org
MAIL: buddhist.temple@tacomabt.org

Notes on Dharma Exchange - an after-service discussion group

3-27-16 - Rinban Castro indicated the middle school kids were planning to interview eight members of the temple this Sunday who came to Dharma Exchange. . . Koitsu Yokoyama, author of "An Intelligent Life," suffered from a lack of self-confidence as a young person. He attended a conference and learned that becoming one with emptiness helped in his life. Castro Sensei said selflessness is about connecting with everything, and we need to grow through our ego as we grow up. . . He said that Siddhartha became weak and emaciated with his self-inflicted deprivation, which made him disgusted because nothing was working in his quest for Enlightenment. Finally, he was saved from death from a woman who fed him. A participant recommended the book, "Siddhartha" by Herman Hesse, saying it was a lovely book. . . Castro Sensei said we are constantly aware of a sense of self and the ideal of non-self. Warrick Sensei said we want to become selfless. How can I navigate the world

continued on p.9..

Seattle Betsuin Gratefully Acknowledges Donations Received March - April 2016

Funeral / Memorial / Nokotsudo:

Given by:

Toshihiko Hasegawa – Burial Service	\$ 400.00	Karen Kawada
Yoko Isomura – 1 st Year Memorial	\$ 300.00	Toshiko Isomura
Tomio Hamatani – In Memory of	\$ 300.00	Jane Hamatani
Elmer Tazuma – Burial Service	\$ 300.00	Estate of Elmer Tazuma
Florence Tsuchida – Inurnment Service	\$ 300.00	Estate of Florence Tsuchida
Mitsue Matsui – 7 th Year Memorial	\$ 200.00	Takashi Matsui
Sam Taniguchi – In Memory of	\$ 100.00	Fumiye Taniguchi

In Memory of:

Given by:

Nobuichi Fujita	Ruby Yasui
Tomio Hamatani	Daniel Otsuka
Amy Hirasawa	Leslie Wittman
Florence Sumida	Jane Hamatani; Julie Mayeda; Stephanie Ojima
Florence Tsuchida	Sue Furuta
Masao Yamaguchi	Daisy Kuramoto

General Donations:

For:

Katsumi & Terrie Tanino	To Endowment: In Honor of Roy Shimizu's 80 th Birthday
Kawabe Memorial Fund, Bank of America, N.A., Trustee	Grant for General Operating Support
Yaeko Ito	General Donation
Nikkei Concerns	Appreciation for use of facilities
Yakima Buddhist Church	General Donation
Okinawa Kenjin-kai	Appreciation for use of facilities for New Year Party

Correction to April Newsletter listing:

Buddhist Churches of America	2015 Dana Sharing contributions by Mrs. Fumiye Taniguchi and Irene Goto
------------------------------	---

Alzheimer's Association supports unpaid care-partners, family members and friends

Caring for someone with memory loss? Alzheimer's Association caregiver support groups provide a consistent and caring place for people to learn, share and gain emotional support from others who are also on a unique journey of providing care to a person with memory loss. **A free information and support group** for unpaid care partners, family members and friends is held the **4th Tuesday of each month** from **2:00—3:30 pm** at **Group Health Rainier Medical Center, Conference Room, 5316 Rainer Ave S, Seattle, WA 98118**. For more information, contact group facilitator **Janet Ceballos, 206.940.2802. - AH**

.... **Musical Notes** continued from page 4

The Sangha Singers for Earth Day music service were Ron Hamakawa, Kanako Kashima, Irene Mano, Paul Mori, Junko Nakano, Keiko Namekata, Tsukasa Namekata, Sunkie Oye, Ben Shimbo, Etsu Shimbo, Darlene Shimizu, Mas Tamekuni, Akico Taniguchi, Terrie Tanino, Michiko Toyoshima, Rona Warrick, and Dennis Yamashita, also supported by additional other singers from the ukulele band. We are grateful to our special guest instrumentalists Emily (trombone), Courtney Kuroda (violin), Paul Mori (trumpet), Steve Yamasaki (clarinet) and conductor Mark Taylor.

We have more budding youth musicians who are interested in participating for future services and do encourage anyone to find your 'voice' or musical place in our temple music programs, including taking advance of the taiko and ukulele instruction offered. Program planning for the fall music service on November 20 will be developed over the summer and early fall. Dharma School youth musicians, please think about what music you would like to work on. Let's set another record!



Let's help Rev Castro celebrate retirement Mark your calendars for Sunday, November 20. That's when we will honor Rinban Castro for his service to Seattle Betsuin for 31 years and help him celebrate his retirement. The planning committee is looking for old photos and stories from his first days at the temple to the present, which illustrate his character, contributions, and his humor. Please contact Ann Oxrieder at webmaster@seattlebetsuin.com or via the temple office if you think you have something to share. – AO

The Betsuin gratefully acknowledges the donations received for the following special services.

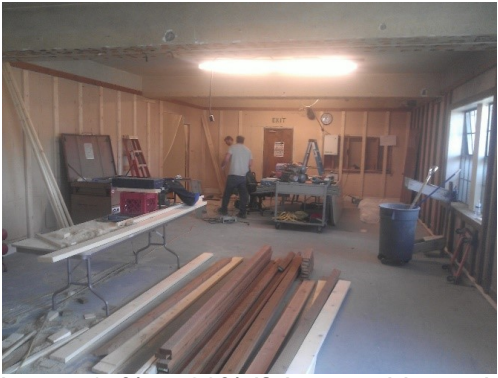
If your name is not listed, the donation may have been received after the deadline for this newsletter and will be listed in the next edition. Please accept our apologies for any inadvertent misspelling of names:

Hanamatsuri: Aisaka, Steven; Aoki, Michele Anciaux -; Aratani, Lauren Asaba -; Arinobu, Gene & Yuki; Asaba, Marian; Baba, Janet; Beard, Clara; Bobrow, Patricia; Chisholm, Steve & Lori; Deguchi, Mae; Desaki, Yasuko; Dodobara, Kenny & Yoshie; Driscoll, Irene Goto -; Fujii, Minoru & Aiko; Fujinari, Suzanne; Fujino, Suteko (Sue); Fujita, Florence; Fukeda, Toshiko; Furuta, Mary Y.; Groves, Fumiko; Hamakami, John & Lynda; Hamakawa, Ron; Hamatani, Jane; Hanada, Miyuki; Hanada, Peggy; Hara, Reiko; Harada, Setsuko; Harano, Nelson; Hasegawa, Kathy; Hatai, Susan; Hikida, Mary; Hinds, Cynthia; Hirata, Michiko; Hoshino, Alan A.; Huh, Jamie; Ichikawa, Satoru & Grace; Isomura, Toshiko; Ito, Yaeko; Jofuku, Scott; Kaku, Dale & Shizue; Kaminishi, Gail; Kaneta, Miyoko; Kashima, Tetsuden & Cecilia Kanako; Kashiwa, Ann T.; Katayama, Mary K.; Kawahara, Ritsuko; Kawamoto, Masako; Keltner, Marc & Janice; Kikuchi, Shizue; Knutzen, Paul & Janet; Ko, Jeffrey & Tina Zumoto -; Kogita, Takako; Kojima, Esther; Kubo, Masako; Kunihiro, Carolyn; Kuramoto, Daisy Toyoko; Kusachi, Sachiko; Kusakabe, Peter; Kuwahara, Kinue; Mamiya, Haruko; Mano, George & Irene; Masunaga, Fumiye; Matsui, Tsugio Jack; Mayeda, Duane & Ann; Mayeda, Julie; Miyata, Tetsuo & Linda; Miyauchi, Takiko; Mizumori, Sheri; Nagai, Ernest & Sanaye (Sunnie); Nakabayashi, Kemi; Nakamura, Yoshio & Judith; Nakanishi, Kiyoko; Nakano, Craig & Joan; Nakano, Junko; Nakashima, Craig & Dana; Namekata, Tsukasa & Keiko; Nishimura, Hisashi & Sadako; Nishizaki, Mabel; Ohtani, Michiye; Okada, Emiko; Oye, Sunako (Sunkie); Ozanich, Kiyomi Taketa -; Parke, Troy & Mayumi Terada -; Sako, Masako; Sakuma, Pauline; Shahbaghlian, Patricia Oye -; Shibata, Dennis M.; Shigaya, Kenneth; Shigaya, Mary S.; Shigaya, Teruko (Terrie); Shimada, Shirley; Shimbo, Ben & Etsu; Shimizu, Roy & Kazumi; Shimizu, Sato & Darlene; Shinoda, Franklin; Shintaku, Frances; Sordetto, Gayle; Suguro, Nori; Suzaka, Gail; Tahara, Masaru & Anna; Takamura, Kuniko; Takashima, Kiyoko; Takemura, Yoshiaki & Naomi; Taketa, Haruso & Sonoe; Taketa, Jean; Taketa, Susan; Tamekuni, Masao & Frances; Tanaka, Rikuko; Tanemura, Kevin; Tanemura, Peggy; Taniguchi, Elsie; Taniguchi, Fumiye; Taniguchi, Martha (Masayo); Taniguchi, Theodore & Akico; Tanino, Katsumi & Terrie; Tazuma, Grace; Tazuma, Miyoko; Terada, Allan & Kayoko; Terada, Calvin J. & Yvette; Teramoto, Margaret; Teramoto, Stuart; Teranishi, Asako; Toyoshima, Michiko; Uchida, Sam & Masako; Uyenishi, Tazuko; Vaart, Michiko Jean; Wada, Machiko; Watanabe, Henry; Wong, Leanne Nishi -; Yahata, Shizue; Yamane, Jeffrey & Susan; Yamasaki, Fujie; Yamashita, Dennis & Elaine Aoki -; Yasui, Ayako (Ruby); Yee, Fukuyo; Yokoyama, Kevin & Kari Ann; Yoritsune, Charlene M.; Yoshida, Fuyo; Yoshimi, Crystal; Yutani, Nobuo; Zumoto, James & Tomiko;

Ohigan - Spring: Beard, Clara; Bobrow, Patricia; Fujii, Minoru & Aiko; Fujinari, Suzanne; Furuta, Mary Y.; Gotchy, Joseph & Margaret; Hamakami, John & Lynda; Hanada, Miyuki; Hanada, Peggy; Horn, Kenneth & Pam; Huh, Jamie; Ichikawa, Satoru & Grace; Ito, Yaeko; Kaminishi, Gail; Kato, Kazue (Katie); Keltner, Marc & Janice; Kogita, Takako; Kosai, Hiroko Janet; Kozai, Yoshi-ko; Kubo, Masako; Kumasaka, Lisa; Kuwahara, Kinue; Mamiya, Haruko; Mano, Mariko; Matsui, Tsugio Jack; Nishizaki, Mabel; Shimbo, Ben & Etsu; Shinoda, Franklin; Sordetto, Gayle; Suguro, Nori; Tamekuni, Masao & Frances; Tanemura, Kevin; Taniguchi, Fumiye; Toyoshima, Michiko; Wong, Leanne Nishi -; Yahata, Shizue; Yamasaki, Fujie;

Earth Day Service: Miyauchi, Takiko

...Chairperson's Message continued from page 3



Facilities wise the directors studied three "what if" scenarios, build a new temple across the street, buy or build a new temple somewhere else, and renovate our existing facility. Based upon building costs, intangibles such as our connection to and proximity with the international district, and community awareness of and familiarity with our current location along with recognizing there would be other costs associated with relocation the board decided we will stay at our current location for the foreseeable future. This decision freed up our facilities and maintenance team to shift from the "fix it when it breaks" to a "renew, renovate and improve" mindset but this wasn't the reason the dining room project started with almost no warning. That was due to our contractor offering to honor pricing in a 2013 bid saving

us 15% to 20% if they could start immediately during a lull they were experiencing rather than wait for our desired after Bon Odori slow summer months. Thank you to everyone who helped do some serious spring cleaning and then emptying the remaining items out of the rooms being remodeled. The project is forcing us to adjust some of our Sunday programming but is scheduled to be done in early June.

The directors also made another exciting decision to lay a long term foundation for funding. They set an objective to add 50 new sustaining members a year. Sustaining members are those who become members of and contribute to the temple's support organization (Ijikai in Japanese). In the face of a multi decade decline in sustaining membership this is a huge undertaking and will require changes in the programs and services we offer to attract and retain new members.

Rev. Sekiya, over the past few months, has described her vision of the temple community as being a warm and inviting place. A temple free of clutter, just like how serene Buddhist temples have been, well maintained and looks like it is being well taken care of. An environment created by both the temple facilities and the programs we offer that is conducive to developing an appreciation for our Jodo Shinshu Buddhist teachings. Sensei has been doing what she could to spruce up and renew our temple and in doing so rejuvenate us. Have you noticed some of her handiwork? The altar area (onaijin in Japanese) has been updated with new celadon incense burners, wooden candles and the outer two (the Prince Shotoku and Seven Masters) altar tables (maejoku) have regained their original three element arrangement (mitsugusoku). The entire onaijin including the back hall is a work in progress to keep its religious ambiance. Sekiya-sensei is also helping Rev. Castro train the minister's assistants who are headed to Kyoto later this year for Tokudo ordination. She is teaching them current practices in rituals.



As part of that training you've probably heard the return of the sawari (bell) during sutra chanting. The different sounds of the bonsho (Indian bell) across the street in the park, the kansho (calling bell) in the back of the altar, the daikin (large bell) that we've been used to hearing during chanting, and the sawari each have their own place within the rituals of our sect and it's good to hear all of them again.



Speaking of hearing things, I'd like to take this opportunity to thank the many musicians and singers who participated in our wonderful Earthday music service last month. It sounded like we had a full orchestra accompanying our choir and the energy and excitement in the hondo was unmistakable. Thank you Kemi Nakabayashi for all the hard work you do planning and coordinating our music program.

With our new focus on renewal, rejuvenation and growth our facilities and programming teams will be reworking their plans. Expect to hear more about this in the coming months and please be sure to participate in the town hall meetings and survey to get your ideas heard. Together we can make our temple something special.

Namo Amida Butsu

HANAMATSURI 2016 PHOTOS: Sunday, April 3



...Notes from Dharma Exchange continued from page 5

today? We need to realize the mundane and spiritual worlds according to Castro Sensei.

Sun, April 3 - Rinban Castro appreciated the large number of members who participated in organizing the beautiful Hanamatsuri of today. Sensei displayed a painting at the service and during Dharma Exchange of the Baby Buddha (Hawaiian style) by Yukio Morikubo, our former president. Sensei feels that losing oneself in the Sangha allows one to forget oneself. He expanded on his Dharma talk about the representations of the Buddha; e.g., golden skin = Asian, blue eyes = Caucasian, and kinky hair = Negroid. He asked, "What kind of statue would we have today?" His answer: It would be no different because we are as mixed now as it was in India where Buddhism started. . . A participant noted he enjoyed the inclusiveness represented in the statue of Buddha. . . Sensei related that the Dalai Lama admonished us to avoid letting our responses be influenced by what others think; and he concluded it was extremely hard to do. . . Sensei told the story of the late Rev. Dr. Taitetsu Unno who had a teacher who was very difficult. It seemed the professor made it his mission to constantly thwart his activities. Later, Unno Sensei realized it amounted to a teaching moment for himself. Castro Sensei recalled his cat ate raw chicken on the kitchen counter. It infuriated Sensei and he chased the cat around the house. Later, he realized it was cat-like behavior. Unno Sensei said we see who we really are in spontaneous moments.

Sun, April 10 - Rev. Jim Warrick elaborated on a Buddhist café, Tera Café, owned by one Rev. Hirotake Asano who is the head priest at the Singyoji temple near Tokyo. Alcohol and food are served at the Tera Café, and a statue of Buddha is displayed. Also, he offers calligraphy, sutra chanting and classes in Buddhism for a fee. He owns four restaurants and a golf shop. His rationale is that many people no longer visit temples and his solution is to bring the temple to the people. There are other businesses, i.e., rent-a-monk from Amazon, which conducts funerals and other rituals for a fee for people not associated with a tem-

ple. In Japan, funerals are conducted by Buddhists, and weddings are handled by Shinto temples. Seldom is a wedding performed by Buddhists -- and they are solemn and expensive occasions. A participant suggested that the Betsuin engage in a café, thereby raising money. Sensei said because we are a non-profit organization we would draw the wrath of Olympia. . . Sensei asked if we noticed any changes to the Naijin. His answer: flowers and candles are arranged in front of the Master's shrines.

Sun, April 17 - Castro Sensei celebrated Earth Day in the Hondo, and Kemi N. arranged a music service.

In place of Dharma Exchange in the dining room (which was dismantled last Sunday) we had a Town Hall meeting in the Hondo. President Alan Hoshino presented an outline of a plan, 30 years in the making, to refurbish the dining room, the middle school room, known as "the chicken room," and the Cub Scout room. Needed repairs have been put on hold for too long. A general contractor submitted a bid for repairs three years ago and will still honor it. The project will take about eight weeks to complete. New building(s) would cost \$20-\$30million; therefore, we will repair as needed while facing declining membership. . . We have three vice chairmen who originally were appointed to fill the chairman's place if necessary. Now they each have individual assignments. . . Ron Hamakawa referred to previously installed new lighting in the Hondo, HV in various rooms, plus a new walk-in refrigerator to replace the original one that was failing. Further, tea cups, coffee pots and zabuton will be moved to a more convenient location close to the areas in which they are used in the dining room. An exit path for evacuation will be in place. He added the kitchen is in need of updating as well. . . A participant asked how to ensure safety will be in place for all and asked if there is a long-term solution. Ron said we are an open Sangha and that we must be aware of our surroundings.

In gassho, Pat Bobrow

ON BEHALF OF THE MEMBERSHIP COMMITTEE... We would like to "thank" the following regular members, for contributing their annual Ijikai dues (the basic dues toward the Temple maintenance/operations). This is the list of those paid members for the fiscal year of 2016.

Minoru & Aiko Fujii; Sue Fujino; Toshiko Fukeda; Peggy Hanada; Shizue Kikuchi; Kinue Kuwahara; Jenny Kwak; Yoshio & Judith Nakamura; Greg and Ann Oxrieder; Teruko Shigaya; George Shimizu; Kiyoko Takashima; Sumie Yokota

We'd like to 'welcome' Jenny Kwak as a new member of our Sangha.

***AS A REMINDER:** The minimum for basic dues towards the Temple maintenance/operations, is \$250 for those over 70 years of age and \$300 for those under 70 years old. **Payments are due by September 30, 2016, for this fiscal year.** If you have any questions about your membership status, contact the Betsuin office: 206-329-0800 or office@seattlebetsuin.com. (compiled by HL, PS, JN, & SO)

General CF News The Camp Fire Council Fire will be held on Sunday, May 22, at 11:30am. At the 10:00 am service, we will be presenting the WoHeLo awards to our 3 recipients. Special guest Rick Taylor from the CF office will be in attendance to make the presentations. We invite all Camp Fire members, families and friends to attend this special service on May 22. submitted by Gayle Teramoto

Support Junior YBA A huge THANK YOU to those who have already donated textiles for the Junior. YBA fundraiser. We have collected a lot of bags, but still need more! Our goal is 500 bags and we are at 150 bags currently. Please keep cleaning out closets, and asking friends! All money raised will directly benefit those in need, as well as the Betsuin YBA. YBA hopes to pay for each member's convention fees for next year. Please, keep on donating to help those in need, as well as YBA. submitted by Alex



On Saturday June 4, YBA is participating in an event called Relay for Life which is held at Green Lake near the Woodland Park Zoo. This is an organized fundraising walk which supports the American Cancer Society as well as cancer survivors. Because this is a team event, anyone is free to join if they wish. To sign up, head over to relay.acsevents.org and look for our team name, the Shinran Steppers. If you are not able to attend the event, you can still help to contribute donations for our team. You can purchase luminarias starting this Sunday, April 24. On the night of the event, a Luminaria Ceremony takes place in order to honor and remember all of the people that have been effected by cancer. If you wish, you can purchase one of these bags for \$10 and personalize it how you like in memory of a loved one. During the ceremony, a candle will be lit inside and they will be placed around the track. This is a very special event so thank you for helping in any way you can. Gassho, Amanda



Troop 252 had an awesome time at Spring Camporee. Drake led the troop through all of the competitions. Upcoming on April 23 and 24, 6 cub scouts will be crossing over to boy scouts. The crossover will be held at our North Bend camp. - Drew

ACRS Walk for Rice Join the Seattle Betsuin Team, "Stepping with the Sangha" on Sat., June 25 at Seward Park for the annual ACRS Walk for Rice. The walk is 2.5 miles, a fun event walking and visiting with friends. This event helps raise money to support the ACRS Foodbank which Provides culturally appropriate food for the most vulnerable in our community.

Donate online at the ACRS website: acrs.walkforrice.org, team name: "Stepping with the Sangha". Our goal is to raise \$1000. Let's make sure that those who are less fortunate will always have food on their table. Donations forms can also be completed and turned into Shizue Yahata (syahata@comcast.net).

Betsuin Events for May 2016

SUNDAYS 10:55am Meditation (convenes in foyer)

May 1

10:00 am FAMILY SERVICE (No Dharma School – teachers at FDSTL)

Youth/Adult: Dr. Nobuo Haneda,
Director Maida Center

Japanese: Dr. Nobuo Haneda

DX: MA Matt May

Meditation: MA

11:45 am SBBWA Board Meeting

1:30 pm Sangha Award Class

May 8

10:00 am FAMILY SERVICE

Youth: Rinban Castro

Adult: Rinban Castro

Japanese: Rev. Sekiya

DX: Rinban Castro

Meditation: MA

May 15

10:00 am Gotan-e Service

Youth/Adult: Rev. Sekiya

Japanese: Rev. Sekiya

DX: TBD

Meditation: MA

10:30 am Dharma School Keiro Visitation

May 22

10:00 am FAMILY SERVICE

(Wohelo Award presentation)

Youth: Rinban Castro

Adult: Rinban Castro

Japanese: Rev. Sekiya

DX: Rinban Castro

Meditation: MA

11:45 am SBBWA Cabinet Meeting

1:30 pm Sangha Award Class

May 29 Rev. Warrick to Yakima for

Memorial Day Service

10:00 am SCHOLARSHIP AWARDS SERVICE

Essay readings by scholarship recipients

Japanese: Rev. Sekiya

DX: Buddhism 101

Meditation: MA

MONDAYS

May 2 10:00 am – 2:00 pm Japanese Language Seminar with Dr. Nobuo Haneda

May 9, 16 Rinban Castro (Days Off)

May 16 10:00 am Shinran Shonin Monthly Memorial Service (Rev. Sekiya)

May 23 10:00 am – 4:00 pm Japanese Language Seminar with Rev. Kiyonobu Kuwahara, CBE Co-Director & Hongwanji Program Coordinator

May 30 **Office closed for Memorial Day**

10:00 am Nisei Veterans Memorial Day Service at Lakeview Cemetery

TUESDAYS

May 3 Rev. Sekiya at Jodo Shinshu Center

May 10 Rinban Castro (Day Off)

May 17 Rinban Castro (Day Off)

May 24 Rev. Sekiya (Day Off)

10:30 am Keiro Service (Rinban Castro)

May 31 Rinban Castro (Day Off – on call), Rev. Sekiya (Day Off)

WEDNESDAYS

May 4 Rev. Sekiya at Jodo Shinshu Center

10:30 am Dharma Support Group (Rinban Castro)

May 11 Rev. Sekiya (Day Off)

10:30 am Dharma Support Group (Rinban Castro)

May 18 Rev. Sekiya (Day Off)

10:30 am Dharma Support Group

May 25

10:30 am Dharma Support Group (Rinban Castro)

THURSDAYS

May 5 Rev. Sekiya at Jodo Shinshu Center

1:30 pm Nikkei Manor Service

May 12 Rev. Sekiya (Day Off)

7:00 pm Seattle University EcoSangha Meditation Group (Rinban Castro)

May 19

1:30 pm Nikkei Manor Service (Irene Goto Sensei)

7:30 pm Betsuin Cabinet Meeting

(Rinban Castro & Rev. Sekiya)

May 26 Rinban Castro (Day Off – out of town)

7:30 pm Betsuin BoD Meeting (Rev. Sekiya)

FRIDAYS

May 6 Rev. Sekiya (Day Off)

12:00 pm Gojikai Service and Luncheon Meeting (Rinban Castro)

May 27 Rinban Castro (Day Off – out of town)

SATURDAYS

May 7 Rev. Sekiya (Day Off)

9:30 – 11:30 am Book Study Group

May 14

10:00 am Rennyo Shonin Memorial Service (Rev. Sekiya)

NW District Council Meeting in Yakima (Rinban Castro)

May 21 Rev. Sekiya (Day Off)

May 28 Rinban Castro (Day Off – out of town)

Rev. Sekiya (Day Off – on call)

JUNE 2016 Major Events of Interest

June 4 Saturday

Gandharan Buddhist Art Lecture by Joe Marino, UW 9:30am

June 5 Sunday

All Sangha Memorial Service

June 12 Sunday

Dharma School Awards & Recognition

Service; last day of Dharma School

June 18 Saturday

Seminar on Death & Dying by NW

Dharma Assoc. hosted at the Betsuin

June 26 Sunday

Bishops'/Rinbans' Memorial Service

June 27 – July 1

KSP (Kids' Summer Program) at SBC

2016 June Newsletter Deadline:

Monday, May 16, 2016

8:00 pm

Seattle Buddhist Church
1427 S Main Street
Seattle, WA 98144

Wheel of the Sangha
**A Monthly Newsletter of
Seattle Buddhist Church**

NON-PROFIT
ORG. U.S.
POSTAGE PAID
SEATTLE, WA
PERMIT NO. 3018

May 2016 Major Events of Interest

April 29 Friday English Seminar on *Hearing* with Dr. Haneda 7 - 9 pm

May 1 Sunday Dr. Nobuo Haneda – guest speaker at 10am Family Service and Japanese Language Service to follow

May 2 Monday Japanese Language Seminar with Dr. Nobuo Haneda from 10:00 am – 2:00 pm

May 15 Sunday 10:00 am Gotan-e Service Shinran Shonin's birthday

May 21 Sat. at Tacoma Buddhist Temple 3 – 5PM in English and May 23 Mon. at Seattle Betsuin 10AM - 4PM in Japanese— Seminars w/ Rev. Kiyonobu Kuwahara, CBE Co-Director & Hongwanji Program Coordinator

May 29 Sunday Betsuin Scholarship Awards Service

May 30 Monday Memorial Day Service at Lakeview Cemetery;
Betsuin Office is Closed

Contact Us

Seattle Betsuin Buddhist Temple

1427 S Main Street
Seattle, WA 98144
Phone: 206. 329.0800

Fax: (206) 329-3703

Email: office
@SeattleBetsuin.com

*Visit us on the web at
WWW.*

SeattleBetsuin.com

***Office Hours:
Mon-Fri 9am—3pm***

***Minister 24 hours:
206.779.2214
Rinban Don Castro
Rev. Sala Sekiya
Rev. Jim Warrick***

Wheel of the Sangha Editors
Irene Goto, English: newsletter@seattlebetsuin.com
Machiko Wada, Japanese: newsletter-jpn@seattlebetsuin.com
Deadline is the third Monday each month at 8PM